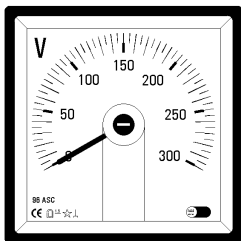


Indicatori analogici da quadro 240°

Analogue switchboard indicators 240°

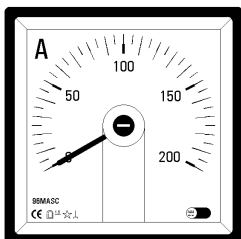


Amperometri e Voltmetri a bobina mobile con raddrizzatore per corrente alternata
Scala intercambiabile
Serie **ASC**

AC moving coil Ammeters and Voltmeters with rectifier
Exchangeable scale
ASC series

- Precisione: classe 1,5
- Formati: 48x48 - 72x72 - 96 x 96

- Accuracy: cl. 1,5
- Front dimens.: 48x48 - 72x72 - 96 x 96

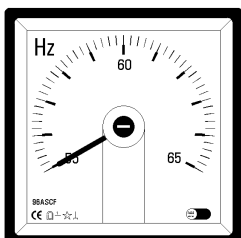


Amperometri e Voltmetri a bobina mobile per corrente continua
Scala intercambiabile
Serie **MASC**

DC moving coil Ammeters and Voltmeters
Exchangeable scale
MASC series

- Precisione: classe 1,5
- Formati: 48x48 - 72x72 - 96 x 96

- Accuracy: cl. 1,5
- Front dimens.: 48x48 - 72x72 - 96 x 96



Frequenzimetri ad indice

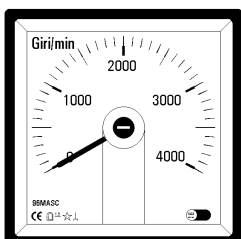
Pointer type Frequencymeters

Serie **ASCF**

ASCF series

- Precisione: classe 1
- Formati: 48x48 - 72x72 - 96 x 96

- Accuracy: cl. 1
- Front dimens.: 48x48 - 72x72 - 96 x 96



Indicatori tachimetrici

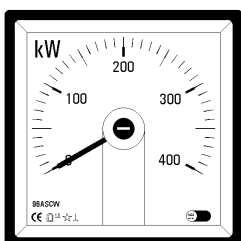
Tachometer indicators

Serie **MASC**

MASC series

- Precisione: classe 1,5
- Formati: 48x48 - 72x72 - 96 x 96

- Accuracy: cl. 1,5
- Front dimens.: 48x48 - 72x72 - 96 x 96



Wattmetri e Varmetri

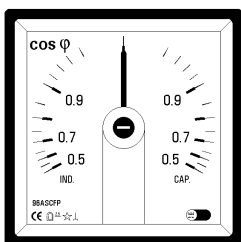
Wattmeters and Varmeters

Serie **ASCW e ASCV**

ASCW and ASCV series

- Precisione: classe 1,5
- Formati: 72x72 - 96 x 96

- Accuracy: cl. 1,5
- Front dimens.: 72x72 - 96 x 96



Cosfimetri per circuiti monofase e trifase

Power-factor meters for single and three-phase circuits

Serie **ASCFP**

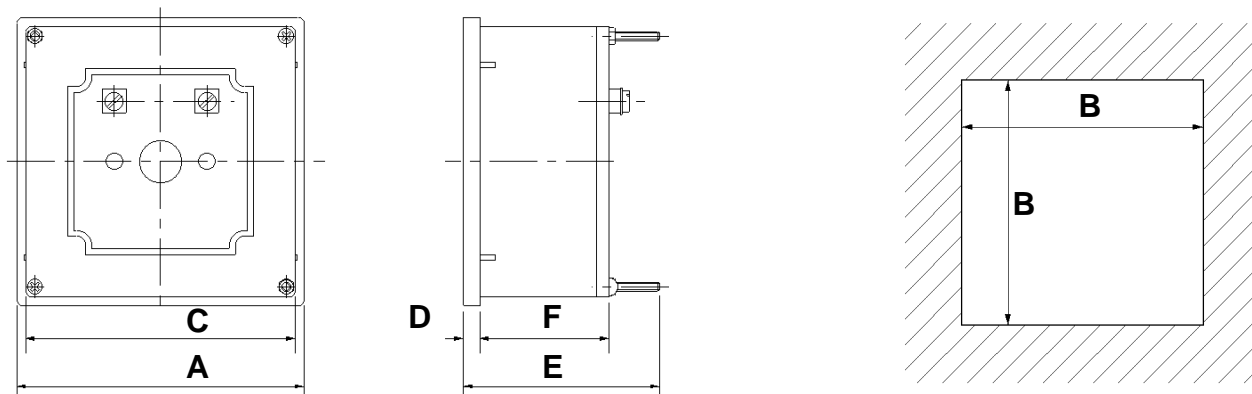
ASCFP series

- Precisione: classe 2,5
- Formati: 72x72 - 96 x 96

- Accuracy: cl. 2,5
- Front dimens.: 72x72 - 96 x 96

Dimensioni d'ingombro

Overall dimensions



Modello / Model	A (mm)	B (mm)	C (mm)	D (mm)	E (mm)	F (mm)
48ASC	48	44.5	42	5.5	65	43
72ASC	72	67	66	5.5	65	43
96ASC	96	91	90	5.5	65	43